



Loewe stellar

The craft design TV with Loewe dual channel dr+ in large screen size

High performance OLED module designed, engineered and tailored by Loewe in Kronach

Dual channel dr+ system with double triple tuner and SSD for multi view and multi recording

Full support of 4x HDMI 2.1 and Ultra HD @ 144 Hz VRR for high-speed gaming

Rich variety of smart streaming apps and VOD services with Tizen OS

Powerful integrated sound bar with 300 watts and Center-In for superior audio performance

Integrated ultra-slim wall mount, optional motorized table or floor stand

Sophisticated design with real materials and magic moments of light and motion



LOEWE. was found by the Loewe brothers as Radio Frequenz GmbH in Berlin in 1923.
Today we still design, develop and produce consumer electronics – Made in Germany.

Data sheet
Loewe **stellar**
February 2025

LOEWE.
Home of Excellence.

www.loewe.tv

Loewe stellar

The craft design TV with Loewe dual channel dr+ in large screen size



Home-made OLED module

The latest generation and technology of OLED open cells with master black polarizer offer highest brightness and unparalleled motion picture performance in Ultra HD resolution.

The OLED module is designed, engineered and tailored by Loewe in Kronach with alu-compound back-forming, massive alu frame and real concrete or aluminum back-cover.

Pre-calibrated in our factory and supporting HDR 10+ Adaptive, these displays meet all relevant filmmaker picture and colour standards for a perfectly natural and impressive movie reproduction.



Loewe dual channel dr+

Equipped with a dual channel chassis, double triple-tuners and a large SSD, the Loewe dr+ system offers multiple viewing and recording possibilities from EPG programmed recording to spontaneous timeshift functions.

Tuners for DVB-T2/C/S2 HD and a easy accessible CI slot support various reception and recording scenarios. The Solid State Drive is perfect for video applications and both energy efficient, extra fast and absolutely noise-less for maximum comfort.



Tizen OS

The premium Tizen OS version 8 is a most convenient and fast smart operating system. The app store offers an extra-large selection of smart apps and a rich variety of video-on-demand services, including e.g. Netflix, YouTube, Disney+ and more.

The system is also compatible with advanced networking features: The support of broad-used dlna, Miracast and others allow comfortable content sharing and control via the home network.

Flexible connectivity with HDMI 2.1 including Ultra HD @ 144 Hz VRR ensures full support of latest game consoles on all four HDMI inputs.



Integrated sound bar and magic.light

An impressive 300 watts front-firing active soundbar behind a special acoustic fabric black speaker grill in harmony together with the Loewe signature.ring and the Loewe magic.light - for a discretely welcome and farewell animation or an atmospheric illumination during movie watching.

Simply adjust it as desired in any colour of the rainbow, at different brightness and saturation levels, by the touch of a button on the Loewe stellar remote.

The dedicated Center-Input allows to apply Loewe stellar 77-83 as the important Center-Speaker in a multi channel home cinema environment.



Design craftsmanship

Sophisticated craft design and clever construction details from the in-house Loewe design and innovation studio.

Created with selected real materials like a four-sided brushed full aluminum frame in a diamond-cut shape, real glas-fiber enforced concrete or aluminum on the back panel and a rotatable table stand made of massive aluminum with a fine hairline-brushed finish. The real concrete back-cover gives each TV its unique fingerprint.

All connections are hidden, and all cables are well guided and hidden by the integrated cable management plus cable covers in the light grey rear cabinet. The solid VESA bolts support any mounting solution.



Sophisticated setup solutions

The Loewe magic.motion feature rotates the TV set motorized on the optional Loewe table or floor stand stellar by the touch of a button on the remote control up to 45° left or right - absolutely silent and smooth

Of course the floor stand is also made of massive aluminum with a fine hairline-brushed finish. The optional floor2ceiling stand creates a spectacular free-floating 360° presentation, the wall mount stellar allows an extra slim wall solution.

Loewe **stellar**

The craft design TV with Loewe dual channel dr+ in large screen size

Achievements



“The TV model stellar shines with latest display technology, powerful hardware and new design language which lift an OLED TV in new dimension.”

International Forum Design, Spring 2024, about Loewe stellar
iF DESIGN AWARD 2024



reddot winner 2024

“The Loewe stellar is an OLED television that, thanks to the modular construction of its display module, offers a multitude of possibilities for material combinations.”

Red Dot, Spring 2024, about Loewe stellar
reddot winner 2024



“The Loewe stellar has an extraordinary extraordinary look with a perfect 360-degree design, consistent and unmistakable for all display sizes.”

audiovision magazine, edition 10/2024, about Loewe stellar
BEST DESIGN



“Their sophisticated design with selected materials and magical moments of light and motion make them visual highlights in any interior.”

Satvision magazine, edition 01/2025, about Loewe stellar
SATVISION DESIGN AWARD

Loewe stellar

The craft design TV with Loewe dual channel dr+ in large screen size

Achievements



“From the conception of the design, to the development of hardware and software, construction, prototyping and final assembly final assembly of the stellar TV models all development steps at Loewe in Kronach.”

audiovision magazine, edition 10/2024, about Loewe stellar 65 dr+
BEST OLED



“The integrated, front-firing soundbar with 10 drivers, 80 watts of total music power and Dolby Atmos sits behind a high-gloss lacquered metal grill and ensures best speech intelligibility, a wide stereo stereo stage and dynamic film sound.”

audiovision magazine, edition 10/2024, about Loewe stellar 65 dr+
BEST SOUND



“Loewe stellar is not only luxury in terms of its design, but also does its utmost technically to earn a place in the hall of fame of TV legends.”

connect magazine, edition 01/2025, about Loewe stellar 65 dr+
Test result: OUTSTANDING



“In addition to the exterior, the excellent picture quality, in which the high peak brightness and perfect black level ensure a dynamic contrast display, as well as the features (...) are impressive.”

Satvision magazine, edition 02/2025, about Loewe stellar 55 dr+
Test result: VERY GOOD



“The top model is perfectly finished. (...) Only the best is built into the Loewe stellar. (...) It delivers truly excellent pictures. (...) The high price is justified by top marks in all categories.”

Guter Rat magazine, edition 02/2025, about Loewe stellar 55 dr+
Test result: VERY GOOD

Loewe **stellar**

The craft design TV with Loewe dual channel dr+ in large screen size

TV

Loewe stellar 77-83

Scope of delivery includes TV set with integrated sound bar and wall mount

stellar 83: W* x H x PD / TD = 187,5 x 116,5 x 7,0 / 7,1

stellar 77: W* x H x PD / TD = 173,9 x 108,9 x 7,0 / 7,1

flat and tiltable mounting

 alu brushed + alu

Model	Article
stellar 83	63477
stellar 77	63474



Dimensions in cm: W = width, H = height, PD = product depth, TD = total depth. Technical modifications and errors excepted.
* In the area of the side-mounted Loewe clip, the width of the TV set may increase by up to 1 cm, depending on the type of set.

Loewe **stellar**

The craft design TV with Loewe dual channel dr+ in large screen size

Setup solutions

Stand solutions

table stand motor stellar

stellar 83: W* x H x PD / TD = 187,5 x 122,7 x 7,0 / 41,0

stellar 77: W* x H x PD / TD = 173,9 x 115,2 x 7,0 / 41,0

motorized rotatable (+/- 45°), concealed cable routing

floor stand motor stellar

stellar 83: W* x H x PD / TD = 187,5 x 163,2 x 7,0 / 69,5

stellar 77: W* x H x PD / TD = 173,9 x 155,7 x 7,0 / 69,5

motorized rotatable (+/- 45°), concealed cable routing



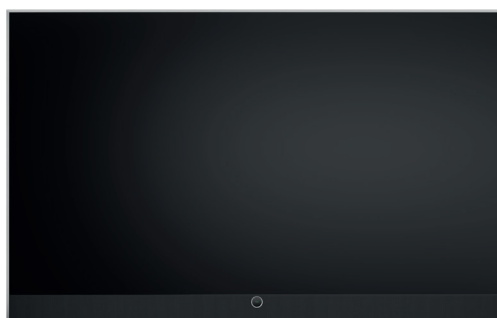
Wall solutions

wall mount slim 432

stellar 83: W* x H x PD / TD = 187,5 x 116,5 x 7,0 / 10,2

stellar 77: W* x H x PD / TD = 173,9 x 108,9 x 7,0 / 10,2

flat mounting



Dimensions in cm: W = width, H = height, PD = product depth, TD = total depth. Technical modifications and errors excepted.
* In the area of the side-mounted Loewe clip, the width of the TV set may increase by up to 1 cm, depending on the type of set.

Loewe stellar

The craft design TV with Loewe dual channel dr+ in large screen size

System components

Loewe multi.room amp

Stereo amplifier for multiroom and homecinema installations with 1.200 watts total music power

Colour

 black



Model


multi.room amp

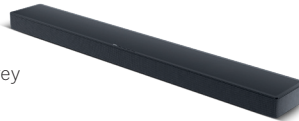
Article

61600

Loewe klang bar5 mr

5.1.2 Dolby Atmos soundbar with wireless subwoofer and 800 watts total music power

 basalt grey




klang bar5 mr

60601

Loewe klang bar3 mr

3.1 Dolby Atmos soundbar with integrated subwoofer and 360 watts total music power

 basalt grey




klang bar3 mr

60614

Loewe klang sub5

Any number of klang sub5 can be connected to a klang bar3 mr or klang bar5 mr at the same time

 basalt grey




klang sub5

60603

Loewe klang mr5

Wireless active speakers with 180 watts for multichannel home cinema or multiroom audio

 basalt grey



klang mr5

60606

Loewe klang mr3

Wireless active speakers with 150 watts for multichannel home cinema or multiroom audio

 basalt grey



klang mr3

60605

Loewe klang mr1

Wireless active speakers with 30 watts as rear surround or for multiroom audio

 basalt grey



klang mr1

60604

Loewe remote klang mr

Multifunctional IR remote control for Loewe klang mr and Loewe klang bar to operate all basic functions and sound settings

 black



remote klang mr

74000

Loewe **stellar**

The craft design TV with Loewe dual channel dr+ in large screen size

Additional information

www.loewe.tv



my Loewe app



Your Loewe contact

We are happy to help personally.

Our Loewe Customer Care Center is here for you:
Monday to Friday 09:00 – 17:00 o'clock
ccc@loewe.de | 0049 9261 99 500

Your Loewe dealer

Technical Data

Loewe stellar

83 dr+

alu brushed + alu

77 dr+

alu brushed + alu

Image

Screen resolution (pixels)	Ultra HD (3840 x 2160)	Ultra HD (3840 x 2160)
Display technology	OLED (WRGB)	OLED (WRGB)
Screen diagonal (cm / inch) / Response time (ms)	210 / 83 / 1	195 / 77 / 1
Panel luminance* (ca. cd/m ²) / Viewing angle (h/v)	1.100 / 120°	1.500 / 120°
Ultra HD scaling / Auto Dimming / Auto Contrast / 24p	● / ● / ● / ●	● / ● / ● / ●
HDR (HLG / HDR10 / HDR10+ / Dolby Vision) / WCG	● / ● / ● (Adaptive) / — / ●	● / ● / ● (Adaptive) / — / ●

Reception

DVB-T2 / C / S2 / HD / Twin Tuner	● / ● / ● / ● / ●	● / ● / ● / ● / ●
DVB radio / DiSEqC / Unicable / Dual channel	● / ● / ● / ●	● / ● / ● / ●
MPEG / MPEG2 / MPEG4 (H.264) / HEVC (H.265)	● / ● / ● / ● (incl. H.266)	● / ● / ● / ● (incl. H.266)
TV+ / Zattoo app / HD+ app	● (Samsung TV Plus) / ● / —	● (Samsung TV Plus) / ● / —

Audio

Power (watts sine / music) / driver (active + passive)	2x 75 / 2x 150 / 6	2x 75 / 2x 150 / 6
Acoustic speaker concept	active bar + bass reflex	closed bar + p. membranes
Front firing / down firing / 2-channel crossover	● / — / ●	● / — / ●
Dolby: Audio / Digital / Digital Plus / Atmos / DTS: HD	● / ● / ● / ● / —	● / ● / ● / ● / —
Class-D amp / Auto Volume / EQ / Loudness	● / ● / ● / ●	● / ● / ● / ●

Operation and apps

Chassis / os / languages (menu, help) / app store	L9 / Tizen OS / 27 / ●	L9 / Tizen OS / 27 / ●
my Loewe app / smart apps (all: Android + iOS)	● / SmartThings app	● / SmartThings app
Voice control: Alexa Skills / other	— / Bixby voice	— / Bixby voice
EPG / Number of stations in channel list	● / 10.000	● / 10.000
Mediatext (HbbTV) / Teletext / Splitscreen	● / ● / ●	● / ● / ●
Multi View / Multi Recording	● / ●	● / ●
Parental Lock / Automatic turn-off / Timer	● / ● / ●	● / ● / ●
Software update (via USB / Internet) / Hotel Mode	● / ● / —	● / ● / —

Multimedia

Loewe dr+: capacity / USB recording / timeshift	1 TB SSD / ○ / ●	1 TB SSD / ○ / ●
Media player / dlna player / browser	● / ● / ●	● / ● / ●
YouTube / Amazon / Netflix / Disney+ / Apple tv+	● / ● / ● / ● / —	● / ● / ● / ● / —

Connectivity and Interfaces

Antenna IEC / satellite F / CI+ V1.4 ECP Slot	1 / 2 / 1	1 / 2 / 1
HDMI	4 x HDMI 2.1	4 x HDMI 2.1
HDMI UHD / ALLM / VRR	● / ● / ● (144 Hz)	● / ● / ● (144 Hz)
HDCP 2.2 / HDMI-CEC / ARC / eARC	● / ● / ● / ●	● / ● / ● / ●
USB-A: number x power	1 x 1,0 A, 1 x 2,0 A	1 x 1,0 A, 1 x 2,0 A
USB-C: number x power	2 x 1,0 A	2 x 1,0 A
Bluetooth / Wake on BT / Miracast / AirPlay	● / ● / ● / —	● / ● / ● / —
LAN / WLAN (Wi-Fi) / Wake on IP / DTS Play-Fi	● / ● / ● / —	● / ● / ● / —
TOSLINK / center in / cube plug stereo	● / — / —	● / — / —
Audio out control: fix / variable / sub (3.5 mm)	— / ● / ●	— / ● / ●
Loewe magic.light / magic.motion	● / ○ (via USB-A 2.0A)	● / ○ (via USB-A 2.0A)
Home automation / Control4 / Crestron	● (via SmartThings) / — / —	● (via SmartThings) / — / —
Power socket	C17 (D type)	C17 (D type)

Energy

EU energy efficiency class: SDR (EEI) / HDR (EEI)	E / E	E / F
EPREL registration No.: https://eprel.ec.europa.eu	2185767	2185763
Mains voltages / Power switch / Off mode (watts)	220-240V, 50 / 60 Hz / ● / 0,0	220-240V, 50 / 60 Hz / ● / 0,0
Energy consumption SDR / HDR (ca. kWh/1000h)	115 / 117	110 / 122
Power consumption max. @ audio 1/8 volume (watts)	650	650
Power consumption standby / network standby (watts)	0,4 / 0,7	0,4 / 0,7

Dimensions (* incl. signature flag: ca. 1 cm)

Weight (ca. kg) excl. / incl. standard setup solution	51,0 / 52,1	47,5 / 48,6
W* x H x D (cm) without setup solution	187,5 x 116,5 x 7,0	173,9 x 108,9 x 7,0
W* x H x D (cm) incl. table stand	187,5 x 122,7 x 41,0	173,9 x 115,2 x 41,0
VESA support / Kensington lock	400 x 200 / —	400 x 200 / —

Scope of Delivery

Speaker	integrated	integrated
Setup Solution / rotate-able	integrated wall mount / fix	integrated wall mount / fix
Remote control (incl. batteries)	Loewe remote stellar & mini (4x AAA)	Loewe remote stellar & mini (4x AAA)
Manual / power cord	● / ● (2,5 m, black)	● / ● (2,5 m, black)
Others	welcome box	welcome box

Optional accessories

Selection of recommended setup solutions and audio systems	floor stand motor stellar 77-83 table stand motor stellar 77-83 multi.room amp	floor stand motor stellar 77-83 table stand motor stellar 77-83 multi.room amp
--	--	--

● = available, ○ = optional, — = not available

* according to panel spec typ. values @ HDR 10%

Technical changes, delivery options, errors and price changes reserved. All product and company names are trademarks™ or registered® trademarks of their respective owners. Their use does not imply any affiliation with or endorsement by these companies. Digital services and content (e.g. apps) and server platforms are provided by third parties. Available for download in the App Store. Observe the terms of use of the third party on the device. The provision, availability (including in certain territories), updating and termination of the provision of this digital content and services on the device are at the sole discretion of the third party. Some services may not be available at the time of purchase of this product. Internet access required. Separate (paid) subscriptions and/or membership required. Ultra HD and HDR availability subject to subscription plan, internet service, device features and content availability.